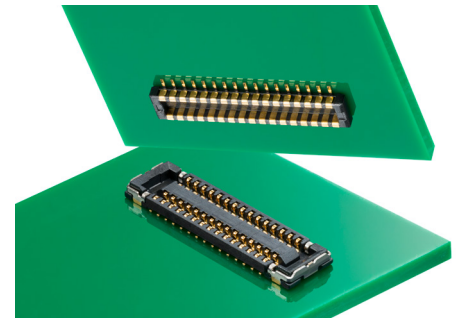


# SlimStack Board-to-Board Connectors, 0.35mm Pitch, SSB6 Standard Series

**molex**

**0.35mm pitch, 0.60mm height B-to-B connectors offer maximum space savings for tight-packaging applications.**

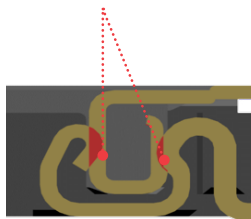
SSB6 Standard Series delivers design flexibility while meeting tight-packaging needs. As consumers continue to demand smaller devices, the need for microminiature designs grows. We can meet these low-profile needs with pitch sizes as small as 0.35mm, mated heights as low as 0.60mm and widths as narrow as 2.00mm.



## Features and Advantages

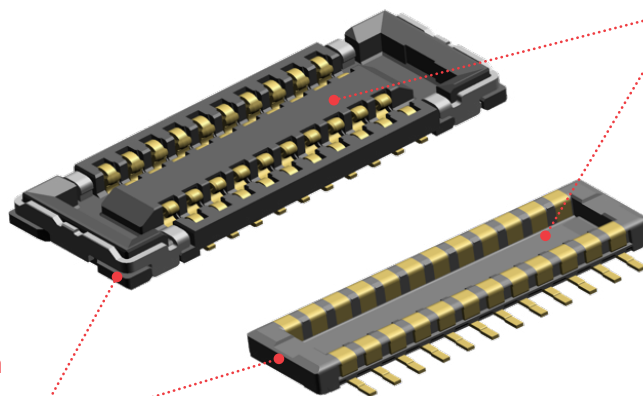
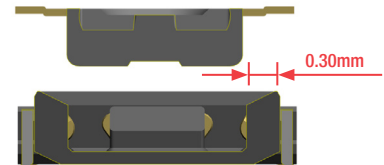
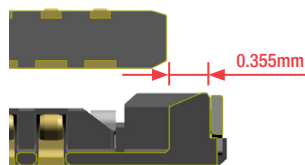
### Dual-Contact Design

Provides secure reliability



### Wide Alignment Area

Provides easy and secure mating



### Wide Pick-and-Place Area

Vacuum space for SMT nozzle

### Low-Halogen

Best material selection for environmental considerations

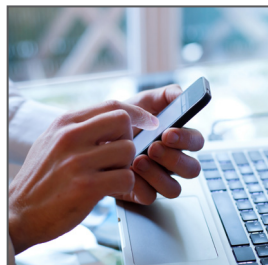
## Applications

### Mobile Devices

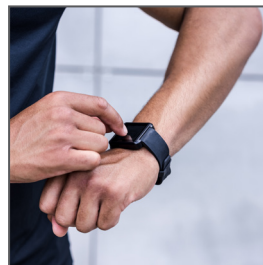
- Smartphones
- Tablet PCs
- Wearable Devices
- Portable Audio
- Portable Navigation Equipment

### Medical Devices

- Patient Monitoring
- Therapeutic and Surgical



Smartphone



Wearable Watch



Patient Monitoring

# SlimStack Board-to-Board Connectors, 0.35mm Pitch, SSB6 Standard Series



## Specifications

### REFERENCE INFORMATION

Packaging: Embossed Tape on Reel  
 Designed In: Millimeters  
 RoHS: Yes  
 Halogen Free: Low-Halogen

### ELECTRICAL

Voltage (max.): 50V  
 Current (max.): 0.3A per circuit  
 Contact Resistance (max.): 80 milliohms  
 Dielectric Withstanding Voltage: 250V AC  
 Insulation Resistance (min.): 100 Megohms

### MECHANICAL

Durability (max.): 30 cycles

### PHYSICAL

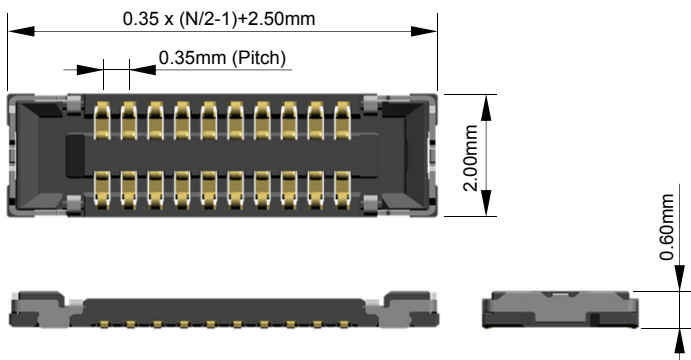
Housing: LCP, UL 94V-0, Black  
 Contact: Copper Alloy  
 Plating:  
 Contact Area – Gold  
 Solder Tail Area – Gold  
 Underplating – Nickel  
 Operating Temperature: -40 to +85°C

## Dimensions

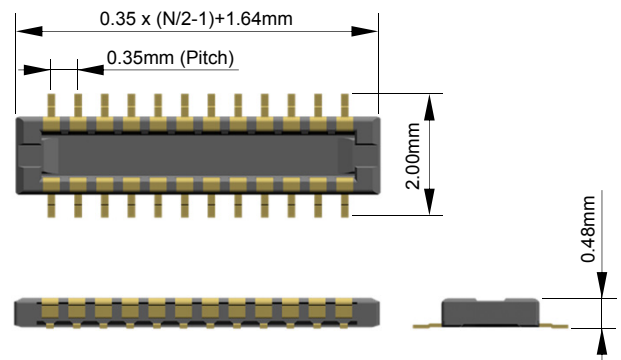
\* Refer to drawing for detail dimension

N: Circuit Size

### Receptacle



### Plug



## Ordering Information

Order No.		Mated Height (mm)	Mated Width (mm)	Circuits
Receptacle	Plug			
504618-**12	504622-**12	0.60	2.00	10, 20, 24, 30, 34, 40, 50, 64, 70

\*\* : Circuit Size

[www.molex.com/link/slimstack.html](http://www.molex.com/link/slimstack.html)

Molex is a registered trademark of Molex, LLC in the United States of America and may be registered in other countries; all other trademarks listed herein belong to their respective owners.