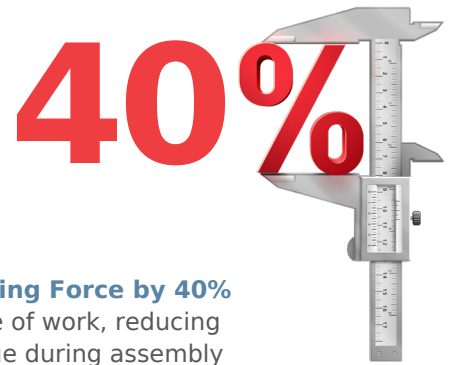


Micro-Fit+ Connector >

The Micro-Fit+ Connector System offers a 3.00mm pitch, a higher-current rating of 13.0A and superior design options for flexibility and efficient assembly



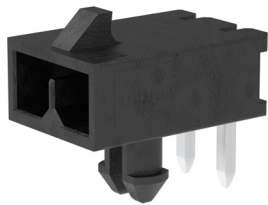
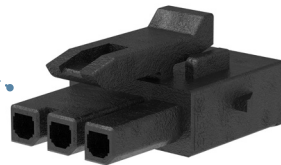
Reduced Mating Force by 40%

Allows for ease of work, reducing operator fatigue during assembly with its unique design compared to standard Micro-Fit 3.0

FEATURES AND ADVANTAGES

Fully isolated contacts on each side of the interface

Help prevent potential arcing

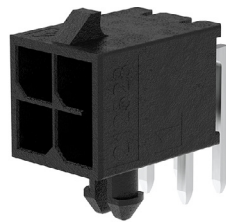


Unique keying design

Prevents mis-mating; different than standard Micro-Fit 3.0

Fully polarized housings

Help ensure proper mating orientation; not compatible with standard Micro-Fit 3.0 Connectors



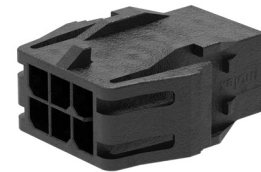
V-0/Glow Wire combination resin

Reduces the cost of materials and labor and allows customers to meet the European standard for electrical requirements



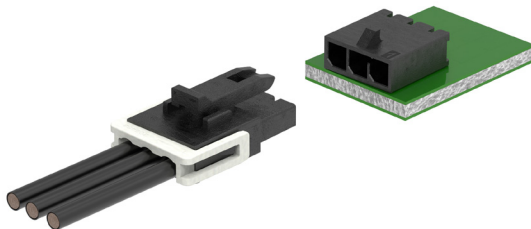
Reflow options available

Reduces labor costs, saves time and resources. Offers a ~260°C reflow-capable temperature



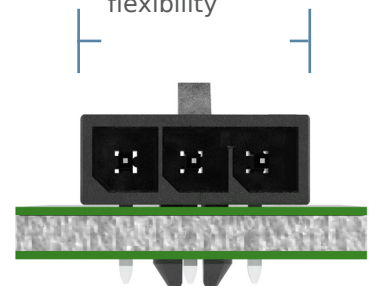
Smaller PCB footprint

Provides design flexibility



Enhanced TPA design

Provides stability and security for the terminals inside the receptacle; offers easy assembly for operators



Micro-Fit+ Connector >

APPLICATIONS

Consumer

Copiers
Freezers
Pinball and slot machines
Printers
Refrigerator
Vending Machines
Video poker and pachinko
Washing machine

Telecommunications/ Networking

Routers and switches
Servers
Storage

Medical

Diagnostic equipment
Patient monitors

Sustainable Energy

Solar power

Automotive

Telemetrics
Non-critical applications



Routers



Appliances



Medical

SPECIFICATIONS

Reference Information

Packaging: Bag, Tray, Reel

UL File No.: E29179

CSA File No.: LR19980

Mates With:

Series: 206832 Series: [206461](#)

Use With:

Series: [206460](#) Series: 206461

Series: [206461](#) Series: [206462](#)

Terminal Used:

Series: [206460](#)

Designed In: Millimeters

RoHS: Yes

Halogen Free: Yes

Glow Wire Capable: Yes

Electrical

Voltage (max.): 600V AC (RMS) or DC

Current (max.): 13.0A

Contact Resistance: 10 milliohms Maximum

Dielectric Withstanding Voltage: No breakdown;
current leakage < 5mA

Insulation Resistance: 1000 Megohms Minimum

Mechanical

Pitch: 3.00mm

Contact Insertion Force: 14.7N (3.3 lbf)

Maximum insertion force

Contact Retention to Housing: 24.5N

Insertion Force to PCB: 13.7N (3.1 lbf)

Minimum retention force

Mating Force (min.):

7.0N per circuit Tin (Sn)

1.0N per circuit Gold (Au)

Unmating Force (min.):

1.4N per circuit Tin(Sn)

0.2N per circuit Gold(Au)

Physical

Housing: Glass Filled Liquid Crystal Polymer

Contact: High Copper Alloy

Plating: Gold(Au) or Tin(Sn) over Nickel overall

PCB Thickness: Standard 1.57mm

Operating Temperature: -40 to +105°C

www.molex.com/link/microfitplus.html