

PowerPlane Busbar Power Connectors >

PowerPlane Busbar Power Connectors deliver high-current performance along with various configurations and feature options, making them applicable for a wide range of power-distribution applications.

FEATURES AND ADVANTAGES

High-conductivity Copper alloy

Provides superior electrical performance

Float-mount design

Allows up to +/- 1.00mm of misalignment, facilitating blind mating in deep racks

Silver plating for lower resistance

Provides excellent reliability and performance

Dimensionally compatible with competitors' connectors

Allows for drop-in replacement for second-source opportunities

Multiple, independent points of contact

Allows for 40% more points of contact than competitive products for high reliability and enhanced performance

Screw-mount or solder-attach options

Allows for flexible and secure fastening to the busbar or PCB



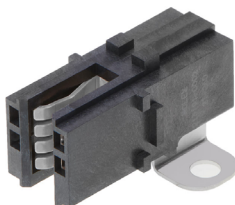
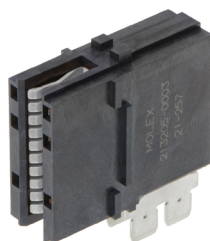
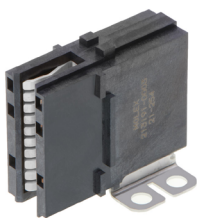
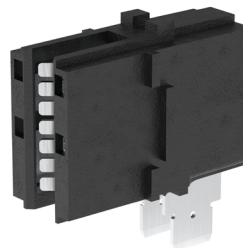
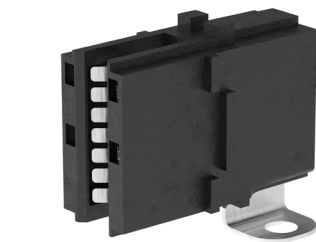
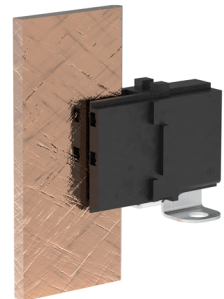
PowerPlane Busbar Power Connectors

One part number mates with 3.00- and 3.18mm-thick busbar tabs

Facilitates mating with de facto output blades for typical power supply applications

Low-voltage drop

Affords minimal heat generation



PowerPlane Busbar Power Connectors >

MARKETS AND APPLICATIONS

Automotive

EV charging stations

Data Center Solutions

Routers
Power shelves
Battery backup units
Servers
Switches
Storage units

Networking

Network interfaces
Networking equipment
Power supplies
Rack-mount servers

Telecommunications

Base stations
Routers
Switches

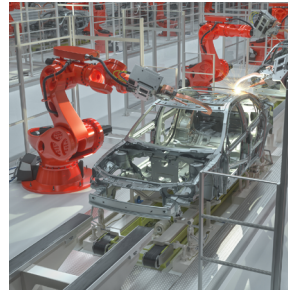
Commercial Vehicle

Energy Storage Systems

Electrical switch panels



Network Servers



Robot Assembly Arm



Electrical Switch Panels

SPECIFICATIONS

Reference Information

Packaging: Tray
UL File No.: E29179
CSA File No.: C22.2 and 182.3-M1987
Mates With: Busbar
Use With:
Series: 213191 ➔ Busbar or PCB
Series: 213205 ➔ PCB
Series: 213274 ➔ Busbar or PCB
Designed In: Millimeters
RoHS: Yes
Halogen Free: Yes
Glow Wire Capable: No

Electrical

Voltage (max.): 600V AC
Current (max.):
Reference product specifications
Contact Resistance (max.):
Reference product specifications
Insulation Resistance (min.):
Reference product specifications

Mechanical

Durability (min.):
Series 213191—200 cycles
Series 213205—200 cycles
Series 213274, 213794—200 cycles

Physical

Housing: High-temperature plastic
Contact: Copper alloy
Mating Surfaces:
Series: 213191 Silver
Series: 213205 Silver
Series: 213274, 213794 Silver
Mounting Tabs:
Series 213191—Tin
Series 213205—Tin
Series 213274—Tin
Underplating: Nickel
Operating Temperatures: -40 to +125°C

www.molex.com/link/busbar.html